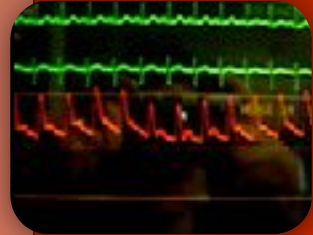
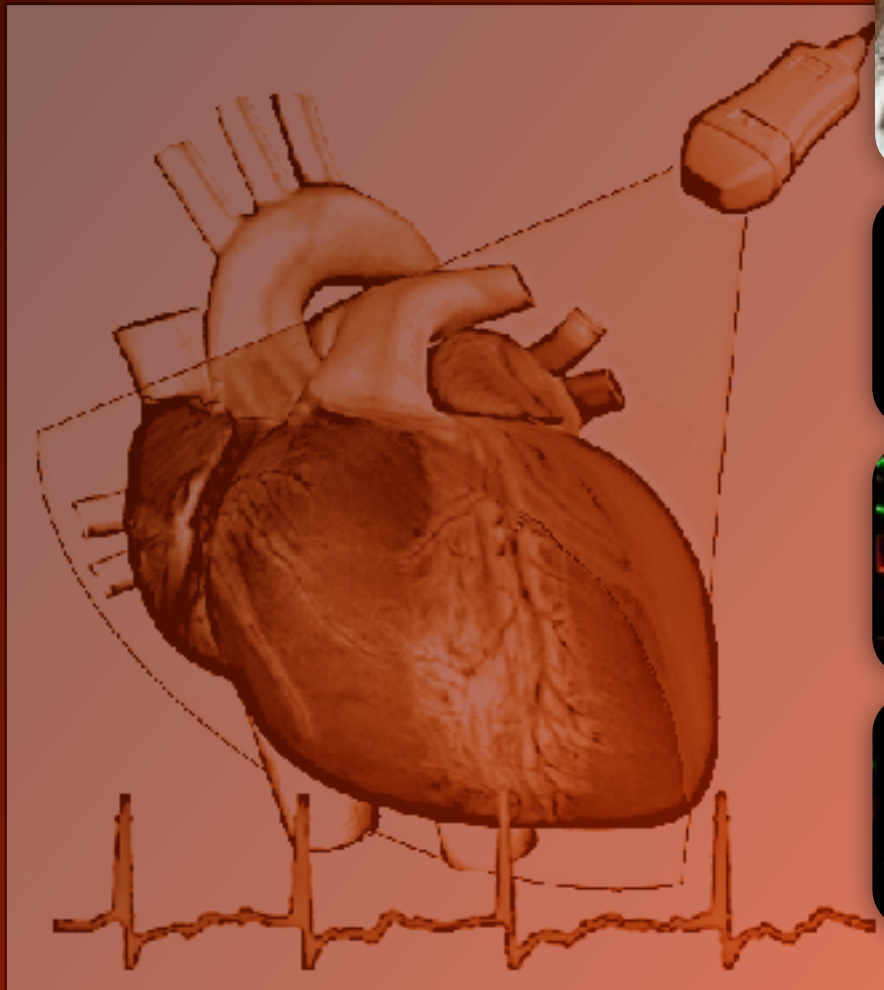


WINFOCUS' FOCUSED CARDIAC ULTRASOUND (WBE)



Based on the “*International Evidence Based Recommendations for Focused Cardiac UltraSound*“ published on JASE 2014”

An International Course for Emergency, Intensive and Critical Care physicians designed and organized by WINFOCUS (www.winfocus.org)



A course on Focused Cardiac Ultrasound (FoCUS) specifically designed for Intensive, Critical Care and Emergency Physicians. The course is targeted at physicians who are new to cardiac ultrasound, and covers the use of limited Transthoracic Echocardiography (TTE) in the setting of cardiac arrest/peri-resuscitation, and as a screening tool for the unstable patient in the ICU/emergency. It might also be of interest to more Echocardiography-experienced clinicians wishing to make their assessment of the critical patient more effective. The course (formerly known as Winfocus Basic Echo, WBE) after having reached its 60th edition since 2008, being delivered in more than 25 countries worldwide, is now presented in its updated, brand new format. Its content is conform to the proceedings of the 1st International Conference on Focused Cardiac UltraSound (*Via G. International Evidence-Based Recommendations for Focused Cardiac Ultrasound - J AM SOC ECHOCARDIOGRAPHY 2014; 27: 683.e1-683.e33*). It's pre-requisite for WINFOCUS WBE international certification.

The faculty gathers reknown experts in the use of and training in point-of-care ultasound,

Endorsed by:



www.winfocus.org



WINFOCUS' FOCUSED CARDIAC ULTRASOUND (WBE)



FoCUS PRINCIPLES & FoCUS EXAM

8.00	<i>Registration</i>
8.30	Welcome, course instructions
9.45	Focused Cardiac Ultrasound in Critical Care: aims and place in echocardiography training
9.05	FoCUS Views and Targets of the exam
9.30	FoCUS signs of Chronic cardiac disease
9.50	FoCUS signs of LV systolic dysfunction
10.10	FoCUS signs of RV systolic dysfunction
10.30	<i>Coffee</i>
10.50	HANDS ON TRAINING (HOT 1): Basic TTE views, Laptop training 6 WORKSTATIONS with healthy models, tutorial laptops <i>(All faculty)</i>
12.50	<i>Lunch</i>
13.50	FoCUS signs of severe hypovolemia
14.10	FoCUS signs of pericardial effusion and tamponade
14.30	FoCUS signs of obvious valvular pathology
14.50	<i>Break</i>
15.00	HANDS ON TRAINING (HOT 2): TTE views wrap up, ALS Megacode, Laptop training, Shock Megacode 6 WORKSTATIONS with healthy models, tutorial laptops, ACLS mannequins <i>(All faculty)</i>
17.00	<i>End of first day</i>

FoCUS IMPLEMENTATION INTO CLINICAL SCENARIOS

8.30	Basic cardiac ultrasound knobology
8.55	Focused Cardiac Ultrasound in cardiac arrest
9.15	Focused Cardiac Ultrasound in shock
9.40	Focused Cardiac Ultrasound in respiratory failure
10.00	Pitfalls and limitations of Focused Cardiac Ultrasound
10.20	Lung ultrasound in cardiac arrest & shock: pneumothorax, “wet lung”
10.55	<i>Coffee</i>
11.15	Additional: FoCUS role in acute aortic syndromes
11.30	Additional: FoCUS integration in the whole body ultrasound approach to shock and respiratory failure
12.00	The WINFOCUS Basic Echo (WBE) certification pathway
12.10	INTERACTIVE CASE SESSION
12.40	<i>End of Course</i>

